

Your visit to Leuven

Practical Information

We are excited to welcome you in Leuven soon!

In the following you will find some useful information to prepare for your trip including hotel suggestions and travel information.

And to make you excited for your stay in Leuven, you will also find a selection of recommended restaurants that serve delicious lunch or dinner for you to enjoy, suggested cafés where you can get your caffeine (or tea) fix and bars where you can experience the Belgian beer capital first-hand.

Travel

Travel to Leuven

Leuven is located in the heart of Belgium, merely a 25 minute train ride away from Brussels. As such the city is easily accessible. There are many ways to travel from the neighbouring countries straight to the heart of our university city.

By Train

We highly recommend travelling to Leuven by train as it is not only a great way of travelling environmentally friendly, but also the fastest and most convenient means of transportation to get to Leuven. The comfortable Thalys, Eurostar, ICE, and TGV high-speed trains will get you from the neighbouring countries to the centre of Leuven in practically no time at all.

International trains usually arrive in Brussels-South (Brussel Midi) or in Liège. From there, you can take a national train to Leuven (approx. 25 minutes).

- For international tickets: <https://www.b-europe.com/EN>
- For travel within Belgium: <https://www.belgiantrain.be/en>

By plane

Brussels Airport | 28 km from Leuven

The easiest and fastest way to reach Leuven from Brussels Airport is by train. A direct train will have you in Leuven in just 15 minutes.

- [Website Brussels Airport](#)
- [Website NMBS](#)

Brussels South International Airport | 90 km from Leuven

You can buy a ticket at Charleroi Airport which combines the bus to Charleroi Sud with the train to Leuven.

- [Website Brussels South Charleroi Airport](#)
- [Website NMBS](#)



By car

We always suggest using public transport whenever possible. If you do come by car it is important to know that the historical centre of Leuven is traffic-free. The rest of the city centre is subdivided into 5 districts. In each district a loop directs traffic from the ring road to a city centre parking garage and back to the ring road

Some hotels also provide parking opportunities on site. Please check directly with the hotel to get more information on parking opportunities and rates. If your hotel does not provide parking opportunities, you can search for the closest car parks and its rates via <https://www.leuven.be/parkings/en>

Travel in Leuven

The historic city centre of Leuven measures only 2km in diameter and as such is easily accessible by foot, bike or public transport.

By bus

The central departure point for the local buses is at the railway station. The buses that leave from here serve all the outlying areas and surrounding communes of Leuven. More information and bus tickets via <https://www.delijn.be/en/>

By bike

If you want to get around by bike you can rent a bike via **Leuven Leisure** which has an ample choice of city bikes available. If you want to rent a bike, you have to make a reservation beforehand. More information can be found [here on their website](#).

[City Map for download/ print](#)

Accommodation

Everything in Leuven is within a short walking distance. Below you will find a selection of hotels in Leuven that are located at strategic points in the city – either close to the central station or in the city centre. Either are great choices.

KU Leuven has agreements with all of these hotels which enables us to get better conditions. Below you can find the agreed prices for these hotels. Please take into account that these prices are based on 'non-last room availability'. This means that only a limited number of rooms can be booked at these rates. When the rooms are fully booked, the price can change according to the occupancy of the hotel.

All hotels listed below shall guarantee their 'best available rate' for individual bookings. This means that at the time of booking, and within the same room-category, the most advantageous price obtainable (also through other channels) will be charged. If it appears that there is a better rate available than the corporate rate, the hotel will charge the better rate. This is only valid if not booked through a 3rd party (for instance booking.com).

Note: The corporate rate for KU Leuven includes breakfast. Prices through other channels can be excluded breakfast! The price for breakfast is usually indicated separately on the relevant websites.

Booking a room with KU Leuven conditions: You only need to mention the contract number (see below) when requesting a booking. The special rates for KU Leuven will then be applied.

ATTENTION: The hotels will only apply the agreed discounts if the above procedure is followed!

Accommodation near the station

Novotel Leuven Centrum****

📍 Vuurkruisenlaan 4, 3000 LEUVEN

☎ + 32 16 21 32 00

✉ H3153@accor.com

💻 novotel.accor.com

💻 businessstravel.accor.com

📍 City Center: 19 minutes on foot



🛏 **Rates (all including breakfast;
incl. VAT)**

- Room double superior single: **137 EUR**
- Room double superior double: **157 EUR**

📄 **contract number: 4600002964**

(this Number needs to be mentioned during the booking so that KU Leuven special rates apply)

Park Inn Leuven ***

📍 Martelarenlaan 36 , 3010 LEUVEN

☎ + 32 16 60 10 00

✉ info.leuven@parkinn.com

💻 www.parkinn.com/hotel-leuven

📍 City Center: 19 minutes on foot



🛏 **Rates (all including breakfast;
incl. VAT)**

- Single room: **132,00 EUR**
- Double room: **142,00 EUR**

📄 **contract number: 4600001723**

(this number needs to be mentioned during the booking so that KU Leuven special rates apply)



Co-funded by the
Erasmus+ Programme
of the European Union

Hotel La Royale



📍 Martelarenplein 6, 3000 LEUVEN

☎ + 32 16 22 12 52

✉ laroyale@lodge-hotels.be

🌐 <https://www.lodge-hotels.be/en/hotels/b/la-royale-leuven>

📍 City Center: 15 minutes on foot



contract number: 4600002939

(this number needs to be mentioned during the booking so that KU Leuven special rates apply)



Rates (all including breakfast; incl. VAT)

- Single room: **80,00 EUR** (limited availability)
- Double room: **95,00 EUR**

Accommodation in the city center

The Lodge Theater***

📍 Bondgenotenlaan 20, 3000 LEUVEN

☎ + 32 16 22 28 19

✉ theaterhotel@lodge-hotels.be

🌐 <https://www.lodge-hotels.be/en/hotels/b/theater-hotel-leuven>

📍 Station: 11 minutes on foot



Rates (all including breakfast; incl. VAT)

- Standard Single room: **104,00 EUR**
- Standard Double room: **119,00 EUR**
- Family Room (4 pers.): **140,00 EUR**



contract number: 4600002940

(this Number needs to be mentioned during the booking so that KU Leuven special rates apply)



Co-funded by the
Erasmus+ Programme
of the European Union

Ibis Leuven Centrum ***



📍 Brusselsestraat 52-58, 3000 LEUVEN

☎ + 32 16 29 31 11

✉ H1457@accor.com

🌐 <https://all.accor.com/hotel/1457/index.en.shtml>

🌐 businesstravel.accor.com

📍 Station: 16 minutes on foot



contract number: 4600003048

(this number needs to be mentioned during the booking so that KU Leuven special rates apply)



Rates (all including breakfast; incl. VAT)

- Single room: **119,00 EUR**
- Double room: **134,00 EUR**

Tafelrond - The Fourth

📍 Vanden Tymplestraat 43/5, 3000 LEUVEN

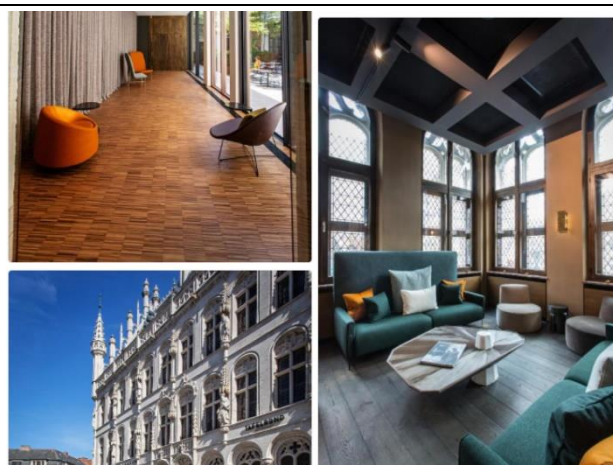
☎ + 32 16 22 75 54

✉ info@tafelrond.com

🌐 www.tafelrond.com



Station: 13 minutes on foot



Rates (all including breakfast; incl. VAT)

- Deluxe room: **159,00 EUR**
- Executive room: **179,00 EUR**



contract number: 4600003096

(this number needs to be mentioned during the booking so that KU Leuven special rates apply)



Co-funded by the
Erasmus+ Programme
of the European Union

Gasthof "De Pastorij" ***

📍 Sint-Michielsstraat 5, 3000 LEUVEN

☎ + 32 16 82 21 09

✉ depastorij@yahoo.com

🌐 <https://depastorij.com/en/>

📍 Station: 16 minutes on foot



contract number: 4600003126

(this number needs to be mentioned during the booking so that KU Leuven special rates apply)



Rates (all including breakfast; incl. VAT)

- Single room: **99,00 EUR**
- Double room for 1 person: **106,00 EUR**
- Double room for 2 persons: **118,00 EUR**
- single suite: **120,00 EUR**
- double suite: **135,00 EUR**

Practical Information

Current COVID Situation

For detailed information on COVID guidelines in Belgium and at KU Leuven specifically, please consult the following resources:

- [KU Leuven COVID guidelines](#)
- [Belgian COVID guidelines](#)

Wifi at KU Leuven

At KU Leuven campuses internet coverage is provided via the WIFI network "[eduroam](#)". If eduroam is installed on your device, you can log into eduroam by using your university ID. **If you don't have an ID on eduroam, please let us know via email before the event** (contact information below).

Contact information

If you have any questions or need any help during your stay in Leuven, please don't hesitate to reach out to the KU Leuven organizational team via **una-europa@kuleuven.be**



Co-funded by the
Erasmus+ Programme
of the European Union

Restaurant, Café, Bar Suggestions

If you would like more suggestions on food and drinks in Leuven, visitleuven.be has a comprehensive guide [here](#). And of course your colleagues at KU Leuven can give you even more of their personal suggestions.

FOR LUNCH

Bar Leuv

📍 Parijsstraat 6, 3000 Leuven

Breakfast, Brunch and Lunch all day

Social Media & Website:   



Ah Quy

📍 Alfons Smetsplein 04, 3000 Leuven

Vietnamese Street Food



Social Media & Website:  



Tabi Loo

📍 Naamsestraat 29, 3000 Leuven

100% Plant Based Street Food

Social Media:  

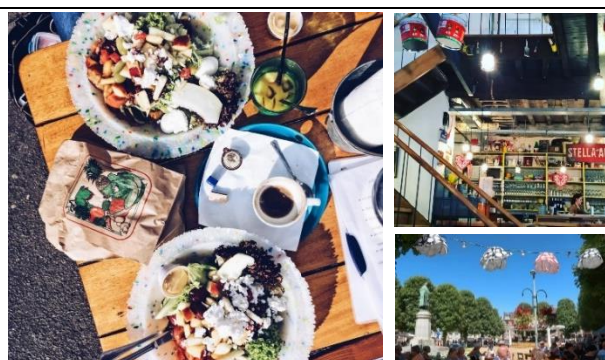


De Werf

📍 Hogeschoolplein 5, 3000 Leuven

Laid back, fair prices, quirky

Social Media & Website  





For Coffee

Noir Coffeebar

📍 Naamsestraat 49, 3000 Leuven

Specialty Coffee Bar



Social Media:  



Coffee Onan

📍 Parijsstraat 28, 3000 Leuven

Roasting and serving coffee

Social Media & Website:  



Koffie en Staal

📍 Dirk Boutsiaan 12, 3000 Leuven

Coffee Bar with steel interior design



Social Media:  

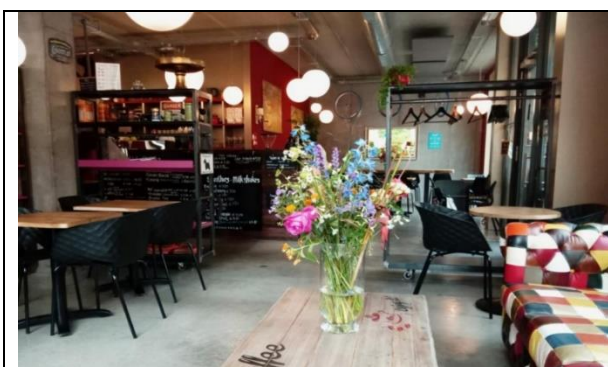


Swartehond

📍 Joris Helleputteplein 1, 3000 Leuven

Cozy coffee bar & tasty pastry

Social Media:  



For Dinner

OPTIMIST

📍 Vismarkt 7, 3000 Leuven

Food Sharing Concept with changing menu

Social Media & Website:



Het Strand

📍 Tiensestraat 138, 3000 Leuven

Vegetarian Eatery with changing menu

Social Media:



Tiensestraat & Muntstraat

📍 Tiensestraat, 3000 Leuven
Muntstraat, 3000 Leuven

These two streets are right next to one another and house **more restaurants and different cuisines than you could ever try**. Something for every taste.



For a Beer

De Blauwe Kater

📍 Mechelsestraat 51, 3000 Leuven

Cozy bar with over 100 different beer brands

Social Media & Website:





The Fiere Margriet

📍 Margarethaplein 11, 3000 Leuven

Cozy bar with over 300 different beers

_Social Media & Website:



Oude Markt



Oude Markt, 3000 Leuven

“The longest bar in Europe”

Because nowhere else can you find as many catering establishments in one place as on this unique square.

